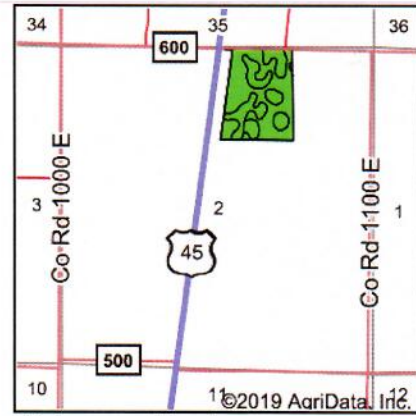
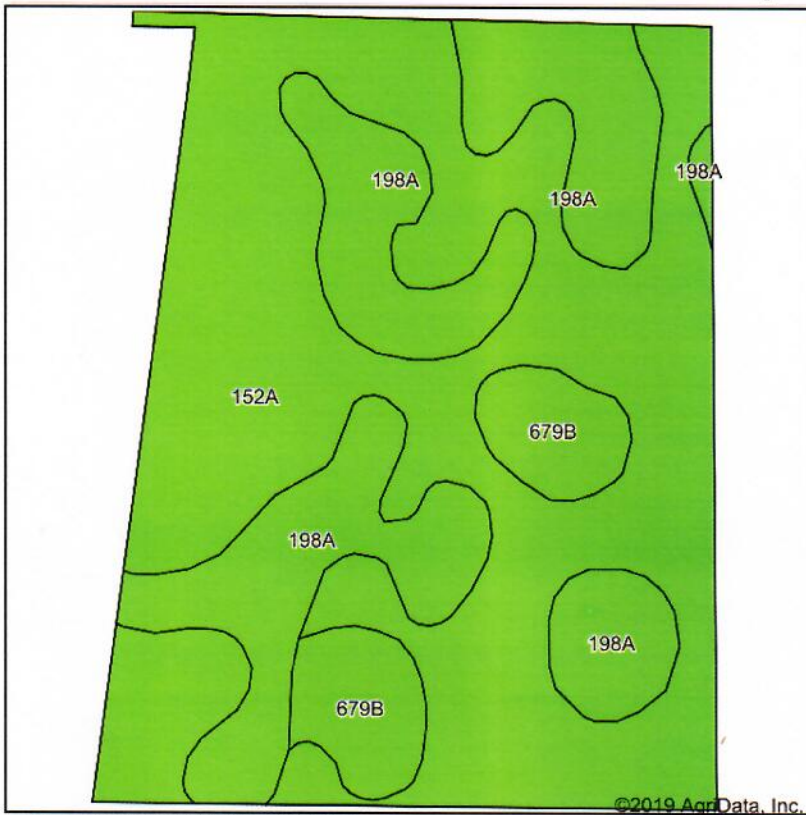


### Soils Map



State: **Illinois**  
 County: **Champaign**  
 Location: **2-17N-8E**  
 Township: **Pesotum**  
 Acres: **40.55**  
 Date: **6/30/2020**



Soils data provided by USDA and NRCS.

Area Symbol: IL019, Soil Area Version: 14

Code	Soil Description	Acres	Percent of field	Il. State Productivity Index Legend	Corn Bu/A	Soybeans Bu/A	Crop productivity index for optimum management
152A	Drummer silty clay loam, 0 to 2 percent slopes	25.47	62.8%	<span style="display:inline-block; width:15px; height:10px; background-color:lightgreen;"></span>	195	63	144
198A	Elburn silt loam, 0 to 2 percent slopes	12.01	29.6%	<span style="display:inline-block; width:15px; height:10px; background-color:lightgreen;"></span>	197	61	143
**679B	Blackberry silt loam, 2 to 5 percent slopes	3.07	7.6%	<span style="display:inline-block; width:15px; height:10px; background-color:lightgreen;"></span>	**192	**59	**141
<b>Weighted Average</b>					<b>195.4</b>	<b>62.1</b>	<b>143.5</b>

**Table: Optimum Crop Productivity Ratings for Illinois Soil by K.R. Olson and J.M. Lang, Office of Research, ACES, University of Illinois at Champaign-Urbana.** Version: 1/2/2012 Amended Table S2 B811

Crop yields and productivity indices for optimum management (B811) are maintained at the following NRES web site:  
<http://soilproductivity.nres.illinois.edu/>

\*\* Indexes adjusted for slope and erosion according to Bulletin 811 Table S3

\*c: Using Capabilities Class Dominant Condition Aggregation Method

Soils data provided by USDA and NRCS. Soils data provided by University of Illinois at Champaign-Urbana.