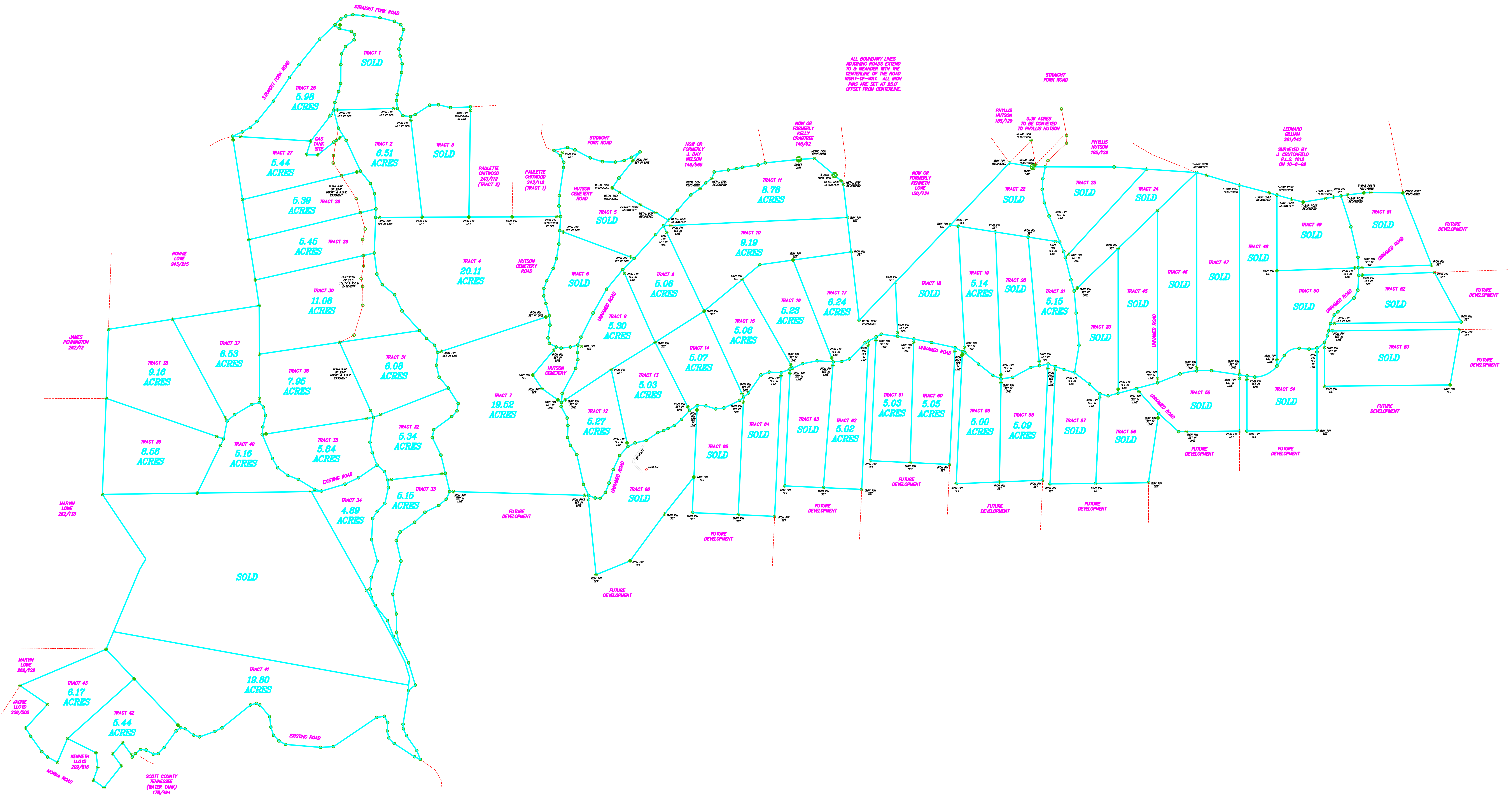


ALL BOUNDARY LINES ADJOINING ROADS EXTEND TO & MEASURE WITH THE CENTERLINE OF THE ROAD RIGHT-OF-WAY. ALL ROW PINS ARE SET AT 25.0' OFFSET FROM CENTERLINE.



TRACT 1  
**SOLD**

TRACT 28  
**5.98 ACRES**

TRACT 2  
**8.51 ACRES**

TRACT 3  
**SOLD**

TRACT 27  
**5.44 ACRES**

TRACT 28  
**5.39 ACRES**

TRACT 29  
**5.45 ACRES**

TRACT 30  
**11.08 ACRES**

TRACT 37  
**6.53 ACRES**

TRACT 36  
**7.95 ACRES**

TRACT 31  
**6.08 ACRES**

TRACT 38  
**9.16 ACRES**

TRACT 39  
**8.56 ACRES**

TRACT 40  
**5.18 ACRES**

TRACT 35  
**5.84 ACRES**

TRACT 32  
**5.34 ACRES**

TRACT 33  
**5.15 ACRES**

TRACT 34  
**4.89 ACRES**

**SOLD**

TRACT 41  
**19.80 ACRES**

TRACT 43  
**6.17 ACRES**

TRACT 42  
**5.44 ACRES**

TRACT 5  
**SOLD**

TRACT 10  
**9.19 ACRES**

TRACT 9  
**5.08 ACRES**

TRACT 8  
**SOLD**

TRACT 8  
**5.30 ACRES**

TRACT 14  
**5.07 ACRES**

TRACT 13  
**5.03 ACRES**

TRACT 12  
**5.27 ACRES**

TRACT 7  
**19.52 ACRES**

TRACT 65  
**SOLD**

TRACT 63  
**SOLD**

TRACT 62  
**5.02 ACRES**

TRACT 81  
**5.03 ACRES**

TRACT 80  
**5.05 ACRES**

TRACT 59  
**5.00 ACRES**

TRACT 58  
**5.09 ACRES**

TRACT 15  
**5.08 ACRES**

TRACT 16  
**5.23 ACRES**

TRACT 17  
**6.24 ACRES**

TRACT 18  
**SOLD**

TRACT 19  
**5.14 ACRES**

TRACT 20  
**SOLD**

TRACT 21  
**6.15 ACRES**

TRACT 23  
**SOLD**

TRACT 45  
**SOLD**

TRACT 46  
**SOLD**

TRACT 47  
**SOLD**

TRACT 48  
**SOLD**

TRACT 50  
**SOLD**

TRACT 49  
**SOLD**

TRACT 51  
**SOLD**

TRACT 52  
**SOLD**

TRACT 53  
**SOLD**

TRACT 55  
**SOLD**

TRACT 54  
**SOLD**

**FUTURE DEVELOPMENT**

**FUTURE DEVELOPMENT**

**FUTURE DEVELOPMENT**

**FUTURE DEVELOPMENT**

**FUTURE DEVELOPMENT**

**FUTURE DEVELOPMENT**

**FUTURE DEVELOPMENT**

**FUTURE DEVELOPMENT**

**FUTURE DEVELOPMENT**

**FUTURE DEVELOPMENT**

**FUTURE DEVELOPMENT**

**FUTURE DEVELOPMENT**

**FUTURE DEVELOPMENT**

**FUTURE DEVELOPMENT**

**FUTURE DEVELOPMENT**

**FUTURE DEVELOPMENT**

**FUTURE DEVELOPMENT**

**FUTURE DEVELOPMENT**

**FUTURE DEVELOPMENT**

**FUTURE DEVELOPMENT**

**FUTURE DEVELOPMENT**

**FUTURE DEVELOPMENT**

**FUTURE DEVELOPMENT**

**FUTURE DEVELOPMENT**

**FUTURE DEVELOPMENT**

**FUTURE DEVELOPMENT**

**FUTURE DEVELOPMENT**

**FUTURE DEVELOPMENT**

**FUTURE DEVELOPMENT**

**FUTURE DEVELOPMENT**

RONNIE LOWE 243/215  
JAMES PENNINGTON 262/12  
MARYN LOWE 262/133  
MARYN LOWE 262/129  
JACKIE LLOYD 208/205  
KENNETH LLOYD 208/818  
NORMA ROAD  
SCOTT COUNTY TENNESSEE (WATER BANK) 178/484

PAULETTE CHITWOOD 243/112 (TRACT 2)

PAULETTE CHITWOOD 243/112 (TRACT 1)

NOW OR FORMERLY K. DALEY NELSON 148/985

NOW OR FORMERLY KELLY CHADSTREE 146/82

NOW OR FORMERLY KENNETH LINE 150/734

PHYLLIS HUTSON 185/129

PHYLLIS HUTSON 185/129

LEONARD GILLIAM 261/142

CONVEYANCE OF 25.0' UTILITY & 6.0' EASEMENT

CONVEYANCE OF 25.0' UTILITY & 6.0' EASEMENT

CONVEYANCE OF 25.0' UTILITY & 6.0' EASEMENT

CONVEYANCE OF 25.0' UTILITY & 6.0' EASEMENT

CONVEYANCE OF 25.0' UTILITY & 6.0' EASEMENT

CONVEYANCE OF 25.0' UTILITY & 6.0' EASEMENT

CONVEYANCE OF 25.0' UTILITY & 6.0' EASEMENT

CONVEYANCE OF 25.0' UTILITY & 6.0' EASEMENT

CONVEYANCE OF 25.0' UTILITY & 6.0' EASEMENT

CONVEYANCE OF 25.0' UTILITY & 6.0' EASEMENT

CONVEYANCE OF 25.0' UTILITY & 6.0' EASEMENT

CONVEYANCE OF 25.0' UTILITY & 6.0' EASEMENT

CONVEYANCE OF 25.0' UTILITY & 6.0' EASEMENT

CONVEYANCE OF 25.0' UTILITY & 6.0' EASEMENT

CONVEYANCE OF 25.0' UTILITY & 6.0' EASEMENT