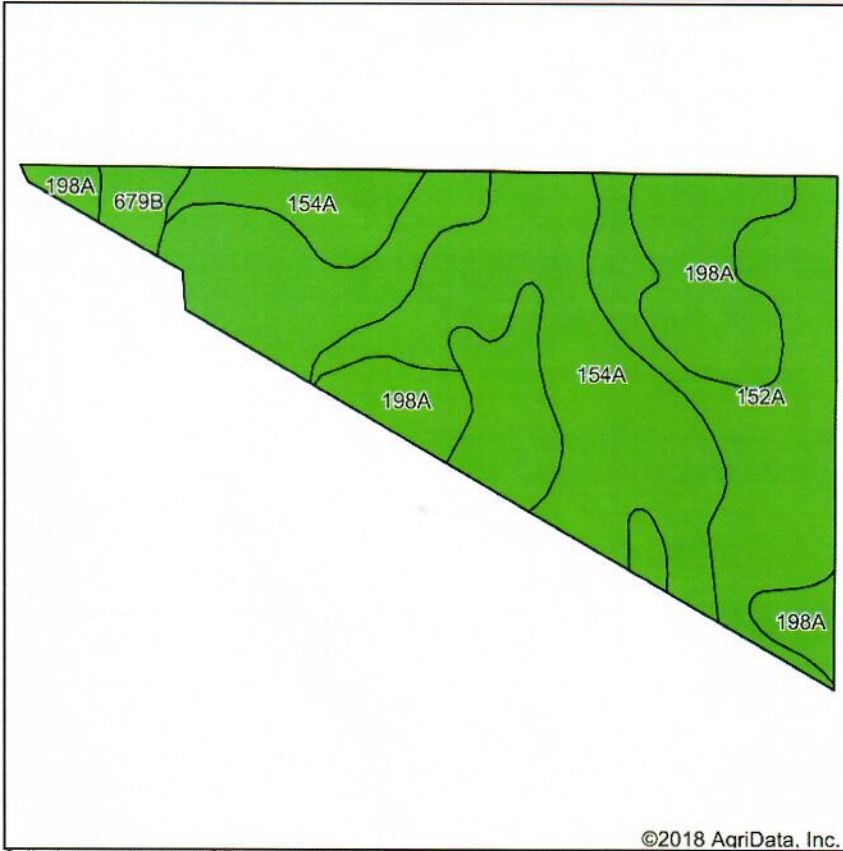
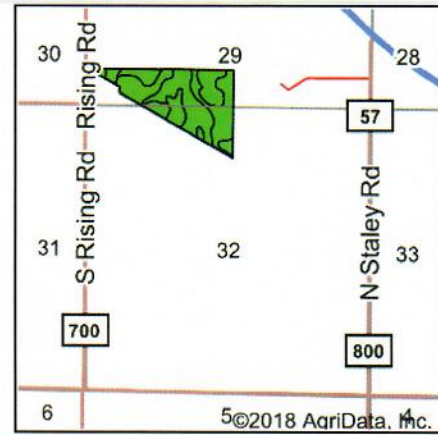


Soils Map



Soils data provided by USDA and NRCS.



State: **Illinois**
 County: **Champaign**
 Location: **32-20N-8E**
 Township: **Hensley**
 Acres: **52.5**
 Date: **1/7/2019**



Maps Provided By:



Area Symbol: IL019, Soil Area Version: 13

Code	Soil Description	Acres	Percent of field	Il. State Productivity Index Legend	Corn Bu/A	Soybeans Bu/A	Crop productivity index for optimum management
152A	Drummer silty clay loam, 0 to 2 percent slopes	23.58	44.9%		195	63	144
154A	Flanagan silt loam, 0 to 2 percent slopes	17.79	33.9%		194	63	144
198A	Elburn silt loam, 0 to 2 percent slopes	9.88	18.8%		197	61	143
**679B	Blackberry silt loam, 2 to 5 percent slopes	1.25	2.4%		**192	**59	**141
Weighted Average					195	62.5	143.7

Table: Optimum Crop Productivity Ratings for Illinois Soil by K.R. Olson and J.M. Lang, Office of Research, ACES, University of Illinois at Champaign-Urbana. Version: 1/2/2012 Amended Table S2 B811

Crop yields and productivity indices for optimum management (B811) are maintained at the following NRES web site:

<http://soilproductivity.nres.illinois.edu/>

*Soil indices and State Productivity Index are based on data according to Bulletin 801 Table 50.

*c: Using Capabilities Class Dominant Condition Aggregation Method